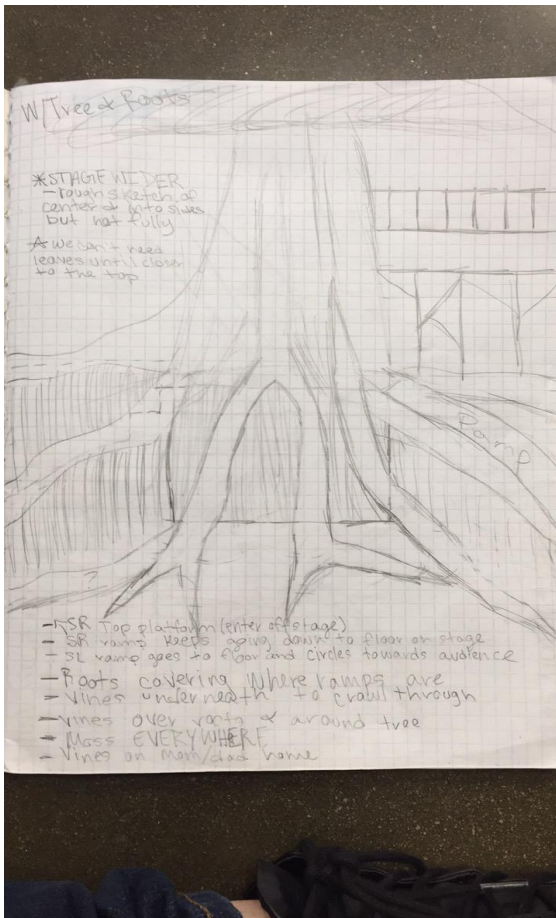
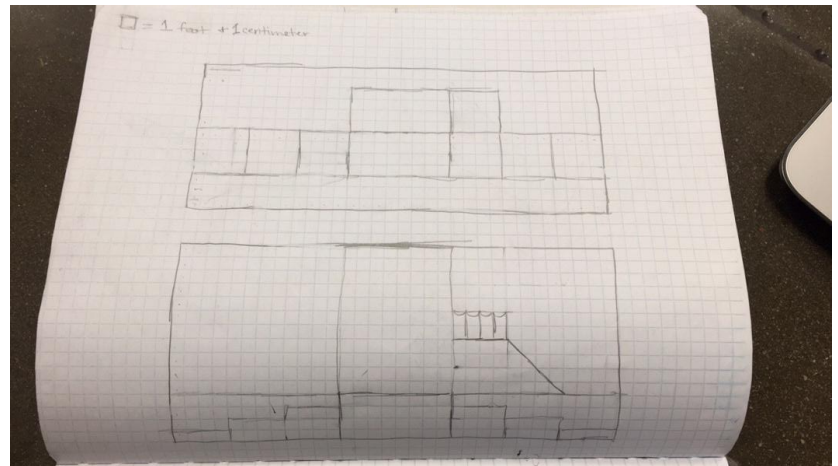


## Set Design

For Tarzan, I made lists and drawings to design the stage set. I made a model and communicated with lighting and scenic to make the show as jungle-like and realistic as possible. I designed the platforms and the tree with vines coming down. I also made sure the platforms were decorated with vines, leaves, and flowers for the ultimate African Jungle experience. I made sure we had the design for both of the jungle, the spider and flowers, and the human camp.



*Initial drawings of main set and the first scene of the show*





Full Set Pictures and spider web



Here you see various pictures from the performance. In order from left to right: *spider web*, *human camp*, *full set*, *the flower scene*, and *the full set and cast*



## Scenic Design

As the set designer, I worked with scenic to make sure the set I had designed came together with colors and textures that corresponded with the African jungle. I put leaves and flowers on the platforms and I helped paint the drops and flats.



*The flower flats and the platforms with vines, and the tree decorated with leaves, moss, and vines.*

## Costume Work

I helped create ape costumes and I found different aspects of Jane's costume. I finished both Kala's and Kerchak's costumes and I made sure they were ready for performance.



*Ape costumes as well as Kerchak  
and Kala*